



Formsprag in Warren, MI and Stieber in Heidelberg, Germany have been designing and manufacturing dependable, precision overrunning and backstopping clutches for over 50 years.

We provide the broadest range of overrunning clutches in the world with designs ranging from 1 to 720,000 (lb.ft.) of torque capacity and over 2,000 different products.

Customer Service

1-800-348-0881 Press #1

Application Support

1-800-348-0881 Press #2

www.formsprag.com

P-1723-4-FC 3/20



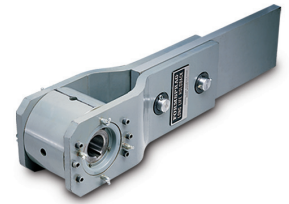
Special Purpose Clutches

For applications where special coupling, actuation or operating environments may dictate the equipment design. Torque capacity from 275 lb.ft. to 27,000 lb.ft. Versatile mounting styles.



General Overrunning Clutches

Available in several self-contained standard bearing configurations for overrunning, backstopping and indexing applications. Torque range from 1.5 to 27,000 lb.ft. Overrunning speeds from 0 to 15,000 RPM.



Holdback Clutches

Specially designed to provide positive roll back protection to equipment like inclined belt conveyors, where reverse rotation must be prevented. Torque range from 300 to 700,000 lb.ft. Speed range from 0 to 2,900 RPM.



CSK Clutches

These units feature Stieber sprag clutches integrated into a 62 Series ball bearing, providing one way action in a bearing envelope. Torque range from 1.8 to 240 lb.ft. Speed range from 3,000 to 15,000 RPM



Clutch Couplings

Often specified for inline mounting between motors and load, these clutch couplings provide reliable performance for overrunning, indexing or backstopping. Broad selection of torque capacities, shaft diameters, speeds and mounts.



HFB/VFB Fan Backstops

Prevent reverse rotation of shafts. High speed inner race overrunning designs. Torque arm included.



FHB External Backstops

Drop in replacement for competitor's design but with higher performance ratings.